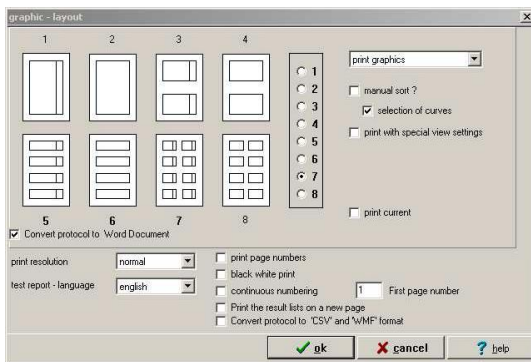
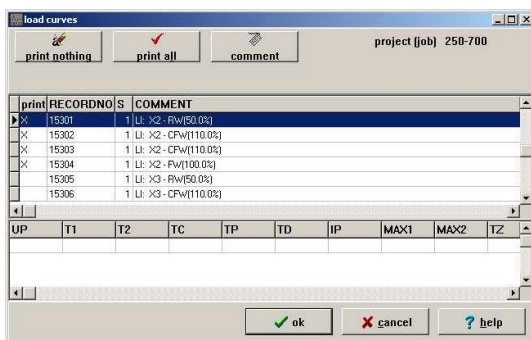


### Wie es funktioniert / How it works:



- Testreport starten
- Einstellungen wie bei Standard-Protokoll
- Grafikausgabe selectieren
- Convert protocol to Word Document wählen

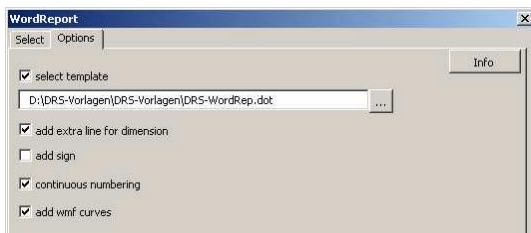
- Start Testreport
- settings according to Standard-Report
- select graphics
- select: Convert protocol to Word Document
- ok



- Print nothing anklicken
- Print all oder
- Kurven auswählen [X]

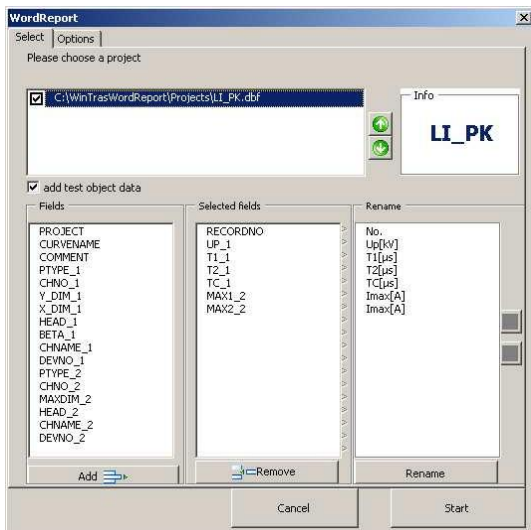
- Select print nothing
- Select print all or
- select shapes [X]

• ok



- Vorlage für Testreport wählen
- Optionen wählen
- WMF-Bilder wählen für Grafikausgabe

- select your template for test record
- select options
- add WMF-curves for grafic output



- Prüfart wählen, hier: LI\_PK: LI in Kanal 1, PK in Kanal 2
- Hinzufügen von Datenbank-Feldern zu ausgewählten Feldern
- Umbenennen von Feldern nach Wunsch
- Dimension in Klammer einfügen
- [X] Testobjekt-Daten hinzufügen auswählen

- select test impulse type, here: LI\_PK: LI in Ch 1, PK in Ch 2
- Add the desired data base fields to selected fields
- Rename field name to your name
- Include dimension in brackets if desired
- [X] mark "add test object data"

• Start WinTR-AS WORD®-Report → "Projektname.doc"

### Voraussetzungen / What you need:

- WinTR-AS Version 2.8 +
- WinTR-AS WORD-Report
- Microsoft WORD® 2000 +, XP

- Upgrade anfragen ask for upgrade
- Angebot anfragen ask for offer

Folgende Tabellen und Grafiken werden erstellt und können mit den üblichen WORD®-Funktionen bearbeitet werden:

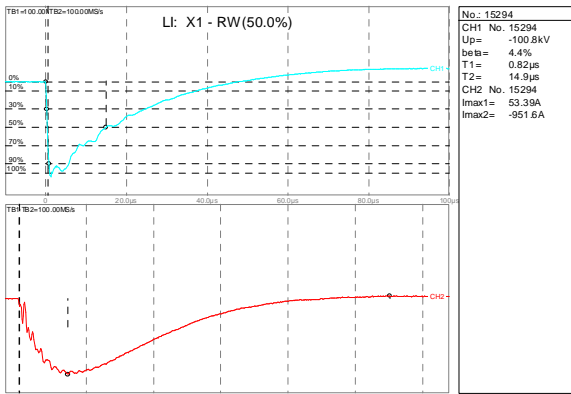
- Transformatorprüfung, Prüflingsdaten-, Prüfergebnis-Tabelle und 8 Bilder
- Kalibrierung mit Blitzstoßspannung, Prüflingsdaten-, Prüfergebnis-Tabelle und Wasserfall-diagramm mit 10 Meßkurven
- Herunterladen der Dateien für Testzwecke unter [www.strauss.de/WordReport](http://www.strauss.de/WordReport)

Following tables and graphics are generated and can be edited with the known WORD® functions:

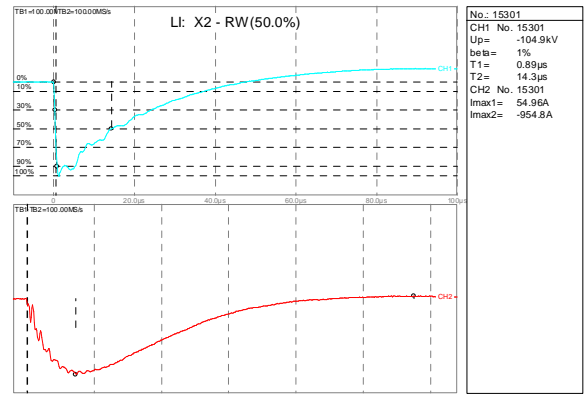
- Transformer test, test object data, test result table and 8 pictures
- Impulse voltage calibration, test object data, test results and waterfall-diagram with 10 shapes
- Download of files for testing under [www.strauss.de/WordReport](http://www.strauss.de/WordReport)

Test-object-data	
PROJECT	50020055
PROTNO	
TESTDATE	15.08.2002
TESTOBJ	DEMO TRANSFORMATOR
SERNO	
SPEC	IEC, IEEE
TESTFLD	
REMARK	
TEMP	23
AIRPRESS	1013
HUMIDITY	60
BIL	200 kV
VOLTAGE	
FREQU	50
CUSTOMER	
MANUFACT	
AIRDENSITY	1
HUMIDCORR	1

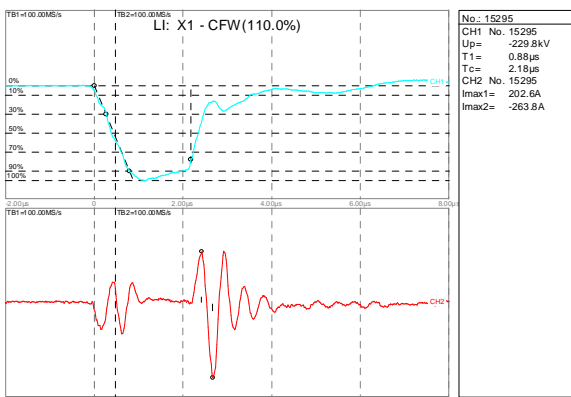
50020055: LI_PK								
NO	No.	Up [kV]	T1 [µs]	T2 [µs]	TC [µs]	I <sub>max</sub> [A]	I <sub>max</sub> [A]	COMMENT
1	15294	-100,8	0,82	14,9		53,39	-951,6	LI: X1 - RW(50.0%)
2	15295	-229,8	0,88		2,18	202,6	-263,8	LI: X1 - CFW(110.0%)
3	15296	-226,1	0,88		2,3	191,6	-267	LI: X1 - CFW(110.0%)
4	15300	-199,1	0,89	14,3		81,66	-1831	LI: X1 - FW(100.0%)
5	15301	-104,9	0,89	14,3		54,96	-954,8	LI: X2 - RW(50.0%)
6	15302	-221,5	0,88		3,81	160,2	-185,3	LI: X2 - CFW(110.0%)
7	15303	-221,8	0,88		3,88	122,5	-216,7	LI: X2 - CFW(110.0%)
8	15304	-200,2	0,89	14,5		86,37	-1848	LI: X2 - FW(100.0%)



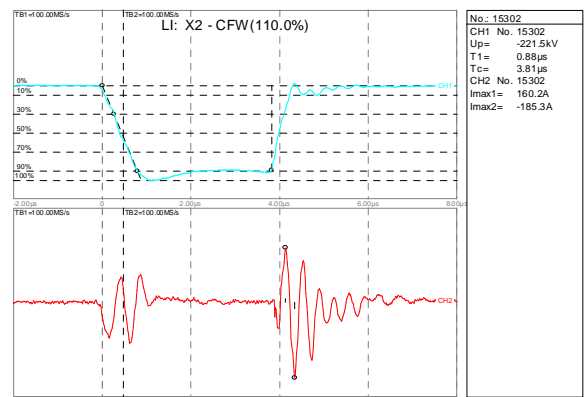
50020055 : LI\_PK : NO 1



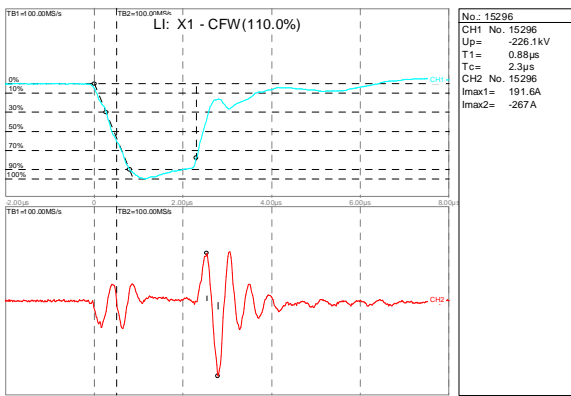
50020055 : LI\_PK : NO 5



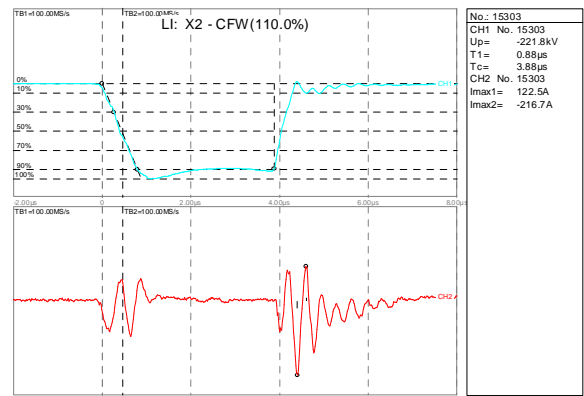
50020055 : LI\_PK : NO 2



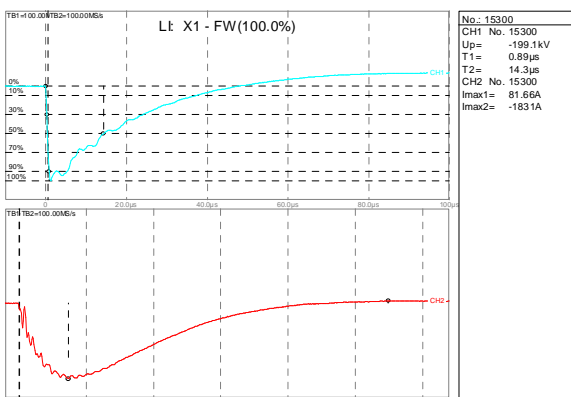
50020055 : LI\_PK : NO 6



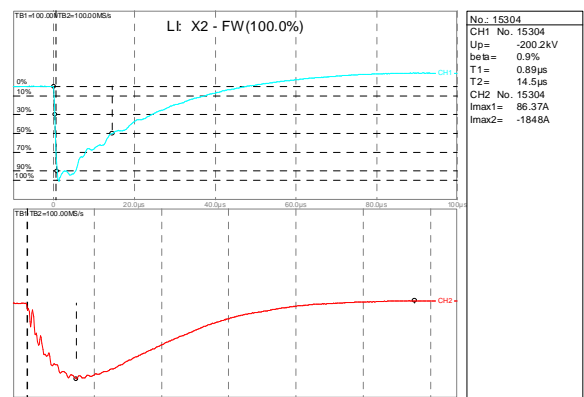
50020055 : LI\_PK : NO 3



50020055 : LI\_PK : NO 7



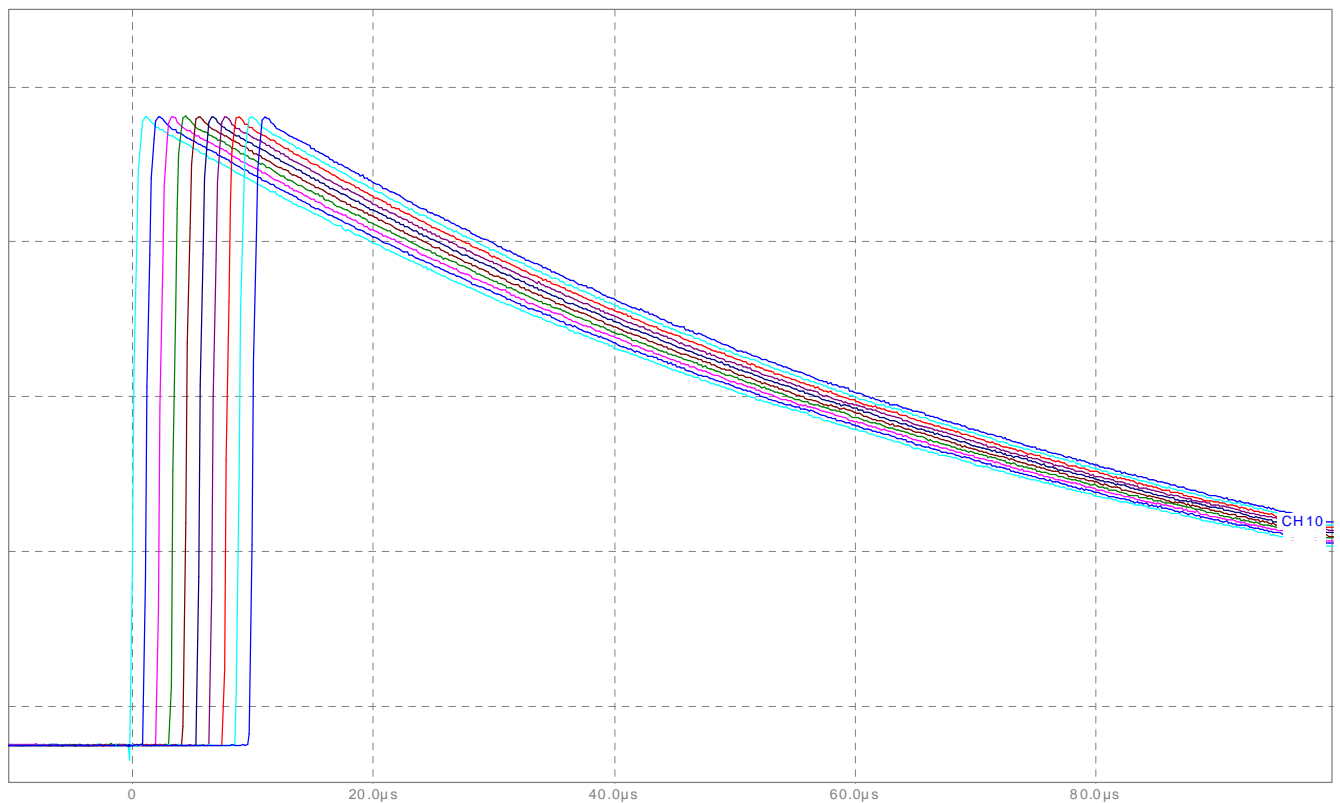
50020055 : LI\_PK : NO 4



50020055 : LI\_PK : NO 8

Test-object-data	
PROJECT	DKD-Calibration 05-01
PROTNO	
TESTDATE	12.01.2005
TESTOBJ	Impuls Voltage Divider with Digital Recorder TR-AS 200-12
SERNO	
SPEC	IEC 61083-1
TESTFLD	
REMARK	Test Calibration
TEMP	21
AIRPRESS	1023
HUMIDITY	65

DKD-Calibration 05-01: LI				
NO	No.	Up [kV]	T1 [μs]	T2 [μs]
1	20058	41,377	0,8442	60,897
2	20059	41,37	0,8429	60,936
3	20060	41,376	0,8424	61,002
4	20061	41,402	0,8437	60,931
5	20062	41,377	0,8421	60,976
6	20063	41,395	0,845	60,997
7	20064	41,411	0,8442	60,965
8	20065	41,407	0,8438	61,011
9	20066	41,391	0,8431	60,961
10	20067	41,406	0,8443	60,962



DKD-Calibration 05-01: LI : NO 1